

Catalog No.: RP03248 **Recombinant**

Species	Gene ID	Swiss Prot
Human	8115	P56279

N-His

T-cell leukemia/lymphoma protein 1A;
TCL1; TCL1A

Source	Purification
E.coli	≥ 85 % as determined by SDS-PAGE

Calculated MW	Observed MW
15.2 kDa	20-25 kDa

Please contact us for more information.

Lyophilized from a 0.22 μm filtered solution of PBS, pH 7.5. Contact us for customized product form or formulation.

Centrifuge the vial before opening. Reconstitute to a concentration of 0.1-0.5 mg/mL in sterile distilled water. Avoid vortex or vigorously pipetting the protein. For long term storage, it is recommended to add a carrier protein or stabilizer (e.g. 0.1% BSA, 5% HSA, 10% FBS or 5% Trehalose), and aliquot the reconstituted protein solution to minimize free-thaw cycles.

 | 400-999-6126

 | cn.market@abclonal.com.cn

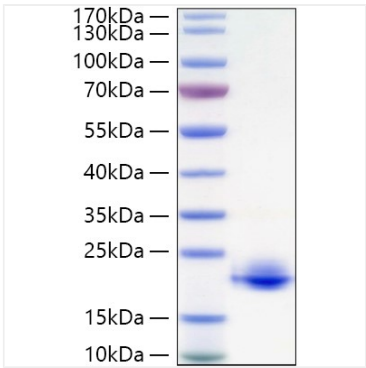
 | www.abclonal.com.cn

TCL1A is a member of the TCL1 family. TCL1 protooncogene is expressed in CD3-CD4-CD8- precursor T cells and is extinguished at the CD4+CD8+ stage of thymocyte development. In B cells, TCL1 is first expressed in pro-B cells and remains high in naive mantle zone B cells of peripheral lymphoid tissues. The TCL1 protooncogene is overexpressed in many mature B cell lymphomas, especially from AIDS patients. It has been demonstrated that TCL1 is a powerful oncogene that, when overexpressed in both B and T cells, predominantly yields mature B cell lymphomas. All TCL1 isoforms bind to the Akt pleckstrin homology domain.

Recombinant Human TCL1A Protein is produced by E.coli expression system. The target protein is expressed with sequence (Ala2-Asp114) of human TCL1A (Accession #P56279) fused with His tag at the N-terminus.

Store at -20°C. Store the lyophilized protein at -20°C to -80 °C up to 1 year from the date of receipt.
After reconstitution, the protein solution is stable at -20°C for 3 months, at 2-8°C for up to 1 week.
Avoid repeated freeze/thaw cycles.

Validation Data



Recombinant Human TCL1A Protein was determined by SDS-PAGE under reducing conditions with Coomassie Blue.