

Catalog No.: RP03277 **Recombinant**

Species	Gene ID	Swiss Prot
Human	5319	P04054

C-His

Phospholipase A2; PLA2G1B; PLA2;
PLA2A: PPLA2

Source	Purification
HEK293 cells	≥ 90 % as determined by SDS-PAGE

Calculated MW	Observed MW
17.20 kDa	15-20 kDa

< 1 EU/μg of the protein by LAL method.

Lyophilized from a 0.22 μm filtered solution of 10 mM Tris, 5 mM CaCl_2 , pH 8.0. Contact us for customized product form or formulation.

Please contact us for reconstitution instructions.

 | 400-999-6126

✉ | cn.market@abclonal.com.cn

 | www.abclonal.com.cn

Phospholipase A2 (PLA2) plays crucial roles in diverse cellular responses, including phospholipid digestion and metabolism, host defense and signal transduction. PLA2 provides precursors for generation of eicosanoids, such as prostaglandins (PGs) and leukotrienes (LTs), when the cleaved fatty acid is arachidonic acid, platelet-activating factor (PAF) when the sn-1 position of the phosphatidylcholine contains an alkyl ether linkage and some bioactive lysophospholipids, such as lysophosphatidic acid (lysoPA).

Recombinant Human Phospholipase A2/PLA2G1B Protein is produced by HEK293 cells expression system. The target protein is expressed with sequence (Met1-Ser148) of human Phospholipase A2/PLA2G1B (Accession #NP_000919.1) fused with His tag at the C-terminus.

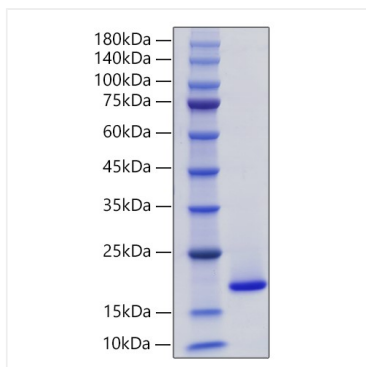
Measured by its ability to hydrolyze 1-Hexadecanoyl-2-(1-pyrenedecanoyl)-sn-glycero-3-phosphomethanol. The specific activity is >2500 pmol/min/μg.

Store at -20°C. Store the lyophilized protein at -20°C to -80 °C up to 1 year from the date of receipt.

After reconstitution, the protein solution is stable at -20°C for 3 months, at 2-8°C for up to 1 week.

Avoid repeated freeze/thaw cycles.

Validation Data



Recombinant Human Phospholipase A2/PLA2G1B Protein was determined by SDS-PAGE under reducing conditions with Coomassie Blue.