

**Catalog No.: RP03316LQ** **Recombinant**

Species	Gene ID	Swiss Prot
Human	1021&595	Q00534&P24385

N-GST (CDK6) & N-Flag-His (Cyclin D1)

CDK6; CDKN6; Cyclin-dependent kinase 6; Cyclin D1; CCND1; BCL1; PRAD1; G1/S-specific cyclin-D1

<b>Source</b>	<b>Purification</b>
Baculovirus-Insect Cells	≥ 90 % as determined by SDS-PAGE; ≥ 90 % as determined by HPLC.

## 63.5 kDa/36.5 kDa 50-60 kDa/30-40 kDa

< 1 EU/μg of the protein by LAL method.

Supplied as a 0.22 µm filtered solution in 50 mM HEPES, 150 mM NaCl, 5% glycerol. (pH 7.5). Contact us for customized product form or formulation.

Please use running water to thaw it quickly.

 | 400-999-6126

 | [cn.market@abclonal.com.cn](mailto:cn.market@abclonal.com.cn)

 | [www.abclonal.com.cn](http://www.abclonal.com.cn)

CDK6 also known as cell division protein kinase 6 is a member of the cyclin-dependent kinase family of Ser/Thr protein kinases. It is positively regulated primarily by its union to the D cyclins D1, D2 and D3. The activity of CDK6 first appears in mid-G1 phase, which is controlled by the Cyclin D and members of INK4 family of CDK inhibitors. CDK6, as well as CDK4, has been shown to phosphorylate, and thus regulate the activity of, tumor suppressor Retinoblastoma protein making CDK6 an important protein in cancer development.

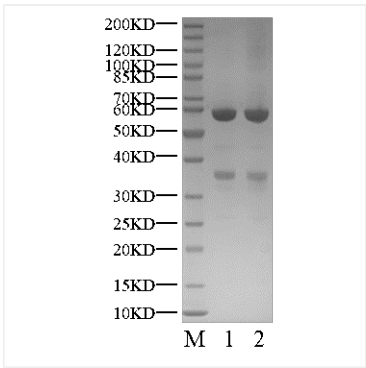
Recombinant Human CDK6&Cyclin D1 Protein is produced by Baculovirus-Insect Cells expression system. The target protein is expressed with sequence (Met1-Ala326 (CDK6) & Met1-Ile295 (Cyclin D1)) of Human CDK6&CCND1 (Accession #Q00534&P24385) fused with a N-GST (CDK6) & N-Flag-His (Cyclin D1) tag.

The activity of CDK6/Cyclin D1 is based on the MSA technology, and the content and ratio of the substrate and the product are directly separated and detected in real time and dynamically by the different migration rates of the substrate and the product after the enzymatic reaction.

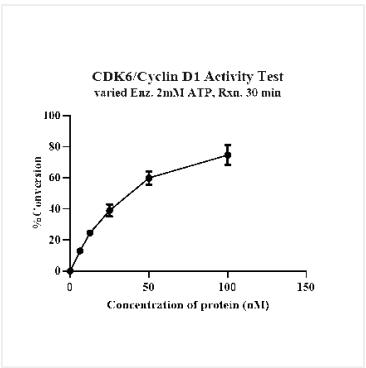
Store at -70°C. This product is stable at  $\leq -70^{\circ}\text{C}$  for up to 1 year from the date of receipt. For optimal storage, aliquot into smaller quantities after centrifugation and store at recommended temperature.

Aliquots below 10  $\mu$ L are not advisable. Product must not be stored in diluted solutions. Avoid repeated freeze-thaw cycles.

Validation Data



Recombinant Human CDK6&Cyclin D1 Kinase was determined by SDS-PAGE under reducing (R) and non-reducing (NR) conditions.



The activity of CDK6/Cyclin D1 is based on the MSA technology, and the content and ratio of the substrate and the product are directly separated and detected in real time and dynamically by the different migration rates of the substrate and the product after the enzymatic reaction.