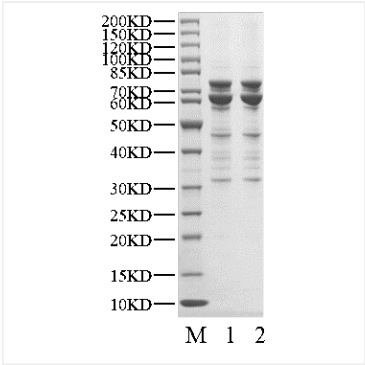
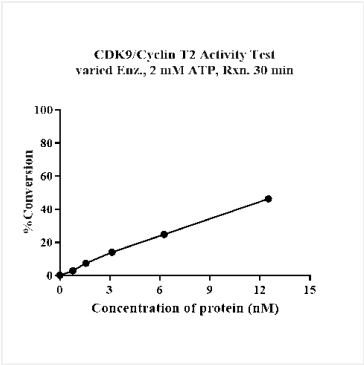


\* □□□□□□□□□□□□□□□□□□□□□□□□□□□□

Validation Data



Recombinant Human CDK9&Cyclin T2 Kinase was determined by SDS-PAGE under reducing (R) and non-reducing (NR) conditions.



The activity of CDK9/Cyclin T2 is based on the MSA technology, and the content and ratio of the substrate and the product are directly separated and detected in real time and dynamically by the different migration rates of the substrate and the product after the enzymatic reaction.