

**Catalog No.: RP03376LQ** **Recombinant**

Species	Gene ID	Swiss Prot
Human	4067	P07948

N-GST

**Synonyms**  
LYN; LYNa; JTK8; p56Lyn; Tyrosine-protein kinase Lyn

<b>Source</b>	<b>Purification</b>
Baculovirus-Insect Cells	≥ 90 % as determined by SDS-PAGE; ≥ 90 % as determined by HPLC.

Calculated MW	Observed MW
85.1 kDa	70-85 kDa


< 1 EU/μg of the protein by LAL method.

Supplied as a 0.22 µm filtered solution in 50 mM Tris-HCl, 150 mM NaCl, 20% glycerol, 5 mM DTT, 100 mM Trehalose. (pH 7.5). Contact us for customized product form or formulation.

Please use running water to thaw it quickly.

 | 400-999-6126

 | [cn.market@abclonal.com.cn](mailto:cn.market@abclonal.com.cn)

 | [www.abclonal.com.cn](http://www.abclonal.com.cn)

Tyrosine-protein kinase Lyn is a protein that in humans is encoded by the LYN gene. Lyn is a member of the Src family of protein tyrosine kinases, which is mainly expressed in hematopoietic cells, in neural tissues liver, and adipose tissue. In various hematopoietic cells, Lyn has emerged as a key enzyme involved in the regulation of cell activation. In these cells, a small amount of LYN is associated with cell surface receptor proteins, including the B cell antigen receptor (BCR), CD40, or CD19. The abbreviation Lyn is derived from Lck/Yes novel tyrosine kinase, Lck and Yes also being members of the Src kinase family.

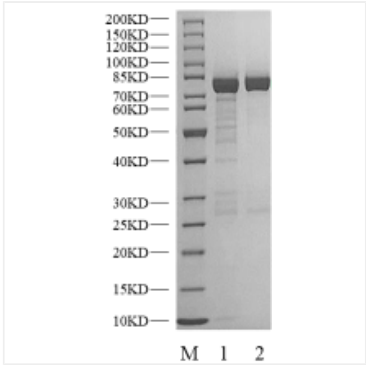
Recombinant Human LYN/LYNa Kinase is produced by Baculovirus-Insect Cells expression system. The target protein is expressed with sequence (Gly2-Pro512) of Human LYN (Accession #P07948) fused with a N-GST tag.

The activity of LYN is based on the MSA technology, and the content and ratio of the substrate and the product are directly separated and detected in real time and dynamically by the different migration rates of the substrate and the product after the enzymatic reaction.

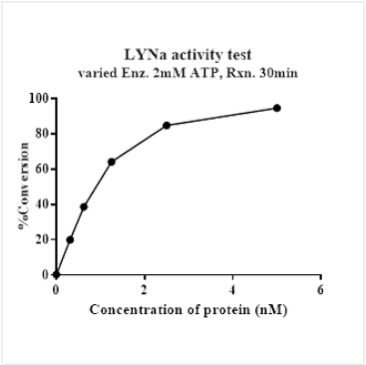
Store at -70°C. This product is stable at  $\leq -70^{\circ}\text{C}$  for up to 1 year from the date of receipt. For optimal storage, aliquot into smaller quantities after centrifugation and store at recommended temperature.

Aliquots below 10 µl are not advisable. Product must not be stored in diluted solutions. Avoid repeated freeze-thaw cycles.

Validation Data



Recombinant Human LYN/LYNa Kinase was resolved with SDS-PAGE under reducing (Lane 1) and non-reducing (Lane 2) conditions.



The activity of LYN is based on the MSA technology, and the content and ratio of the substrate and the product are directly separated and detected in real time and dynamically by the different migration rates of the substrate and the product after the enzymatic reaction.