

www.abclonal.com

Recombinant

Background

Tyrosine-protein kinase receptor UFO is a protein that in human is encoded by the AXL gene. The gene was initially designated as UFO, in allusion to the unidentified function of this protein. AXL is a cell surface receptor tyrosine kinase, part of the TAM family of kinases including TYRO3 and MERTK. However, in the years since its discovery, research into AXL's expression profile and mechanism has made it an increasingly attractive target, especially for cancer therapeutics. In recent years, AXL has emerged as a key facilitator of immune escape and drug-resistance by cancer cells, leading to aggressive and metastatic cancers.

Description

Recombinant Human Tyrosine-protein kinase receptor UFO/Axl Kinase is produced by Baculovirus-Insect Cells expression system. The target protein is expressed with sequence (His464-Ala885) of Human AXL (Accession #P30530) fused with a N-Flag tag.

Bio-Activity

The activity of AXL is based on the MSA technology, and the content and ratio of the substrate and the product are directly separated and detected in real time and dynamically by the different migration rates of the substrate and the product after the enzymatic reaction.

Storage

Store at -70°C. This product is stable at $\leq -70^{\circ}\text{C}$ for up to 1 year from the date of receipt. For optimal storage, aliquot into smaller quantities after centrifugation and store at recommended temperature.

Aliquots below 10 μ L are not advisable. Product must not be stored in diluted solutions. Avoid repeated freeze-thaw cycles.

Endotoxin
< 1 EU/μg of the protein by LAL method.

Formulation

Supplied as a 0.22 μ m filtered solution in 50 mM Tris, 150 mM NaCl, 5% glycerol. (pH 8.0). Contact us for customized product form or formulation.

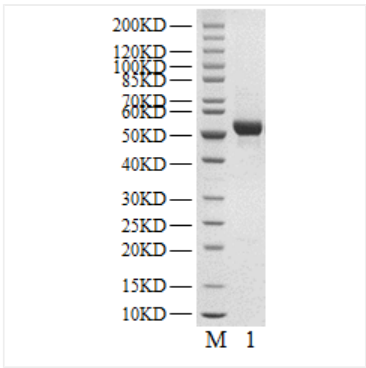
Reconstitution

Please use running water to thaw it quickly.

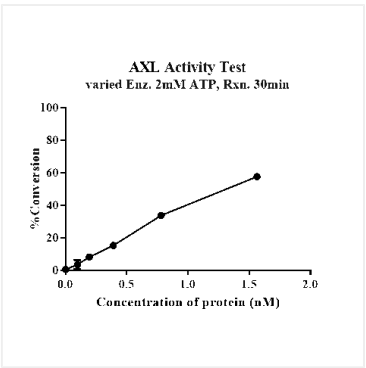
Contact

 | www.abclonal.com.cn

Validation Data



Recombinant Human Tyrosine-protein kinase receptor UFO/Axl Kinase was resolved with SDS-PAGE under reducing (Lane 1) conditions.



The activity of AXL is based on the MSA technology, and the content and ratio of the substrate and the product are directly separated and detected in real time and dynamically by the different migration rates of the substrate and the product after the enzymatic reaction.