

**Catalog No.: RP03403LQ** **Recombinant**

Species	Gene ID	Swiss Prot
Human	1453	P48730

**Tags**  
N-GST

CSNK1D; CK1δ; HCKID; CKI-delta; CKId; CK1d; Casein kinase I isoform delta

<b>Source</b>	<b>Purification</b>
Baculovirus-Insect Cells	≥ 85% as determined by SDS-PAGE; ≥ 85% as determined by HPLC.

Calculated MW	Observed MW
73.8 kDa	60-80 kDa

< 1 EU/μg of the protein by LAL method.

Supplied as a 0.22 µm filtered solution in 50 mM Tris-HCl, 150 mM NaCl, 5% glycerol, 5 mM DTT, 0.1 M Trehalose. (pH 7.5). Contact us for customized product form or formulation.

Please use running water to thaw it quickly.

 | 400-999-6126

 | [cn.market@abclonal.com.cn](mailto:cn.market@abclonal.com.cn)

 | [www.abclonal.com.cn](http://www.abclonal.com.cn)

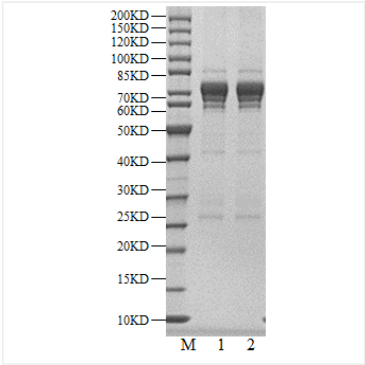
Casein kinase I isoform delta also known as CKI-delta or CK1δ is an enzyme that in humans is encoded by the gene CSNK1D. It is a member of the CK1 (formerly named casein kinase 1) family of serine/threonine specific eukaryotic protein kinases encompassing seven distinct isoforms (CK1α, γ1-3, δ, ε) as well as various post-transcriptionally processed splice variants (transcription variants, TVs) in mammals. Like eukaryotic protein kinases (ePKs) the different isoforms of the CK1 family consist of a N-terminal and a C-terminal lobe (N- and C-lobe, respectively), which are connected via a hinge region. CK1δ is involved in the circadian rhythm, DNA damage and cellular stress, microtubule dynamics, cell cycle progression, genomic stability, mitosis and meiosis. CK1δ is also involved in the regulation of microtubule polymerization and stability of the spindle apparatus and centrosomes during mitosis by directly phosphorylating α-, β-, and γ-tubulin.

Recombinant Human CK1-delta/CSNK1D Kinase is produced by Baculovirus-Insect Cells expression system. The target protein is expressed with sequence (Glu2-Arg415) of Human CSNK1D (Accession #P48730) fused with a N-GST tag.

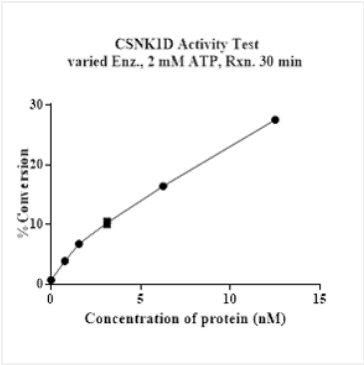
The activity of CSNK1D is based on the MSA technology, and the content and ratio of the substrate and the product are directly separated and detected in real time and dynamically by the different migration rates of the substrate and the product after the enzymatic reaction.

Store at -70°C. This product is stable at  $\leq -70^{\circ}\text{C}$  for up to 1 year from the date of receipt. For optimal storage, aliquot into smaller quantities after centrifugation and store at recommended temperature.

Aliquots below 10  $\mu$ L are not advisable. Product must not be stored in diluted solutions. Avoid repeated freeze-thaw cycles.



Recombinant Human CK1-delta/CSNK1D Kinase was resolved with SDS-PAGE under reducing (Lane 1) and non-reducing (Lane 2) conditions.



The activity of CSNK1D is based on the MSA technology, and the content and ratio of the substrate and the product are directly separated and detected in real time and dynamically by the different migration rates of the substrate and the product after the enzymatic reaction.