

**Catalog No.: RP03505** **Recombinant**

Species	Gene ID	Swiss Prot
Human	3552	P01583

## NO-Tag

IL1A; IL1F1 Interleukin-1 alpha; IL-1  
alpha; Hematopoietin-1

<b>Source</b>	<b>Purification</b>
<i>E. coli</i>	≥ 95 % as determined by SDS-PAGE.

Calculated MW	Observed MW
18.05 kDa	15-20 kDa

Please contact us for more information.

Lyophilized from 0.22µm filtered solution in PBS (pH 7.4).

Centrifuge the vial before opening. Reconstitute to a concentration of 0.1-0.5 mg/mL in sterile distilled water. Avoid vortex or vigorously pipetting the protein. For long term storage, it is recommended to add a carrier protein or stabilizer (e.g. 0.1% BSA, 5% HSA, 10% FBS or 5% Trehalose), and aliquot the reconstituted protein solution to minimize free-thaw cycles.

The protein encoded by this gene is a member of the interleukin 1 cytokine family. This cytokine is a pleiotropic cytokine involved in various immune responses, inflammatory processes, and hematopoiesis. This cytokine is produced by monocytes and macrophages as a proprotein, which is proteolytically processed and released in response to cell injury, and thus induces apoptosis. This gene and eight other interleukin 1 family genes form a cytokine gene cluster on chromosome 2. It has been suggested that the polymorphism of these genes is associated with rheumatoid arthritis and Alzheimer's disease.

Recombinant Human IL-1 alpha Protein is produced by E. coli Cells system. The target protein is expressed with sequence (Ser113-Ala271) of Human IL-1 alpha (Accession #NP\_000566.3) fused with No tag .

Measured in a cell proliferation assay using D10.G4.1 mouse helper T cells. The ED50 for this effect is 9.39-37.58 pg/mL, corresponding to a specific activity of  $2.66 \times 10^7 \sim 1.06 \times 10^8$  units/mg.


Store at -20°C. Store the lyophilized protein at -20°C to -80 °C up to 1 year from the date of receipt.

After reconstitution, the protein solution is stable at -20°C for 3 months, at 2-8°C for up to 1 week.

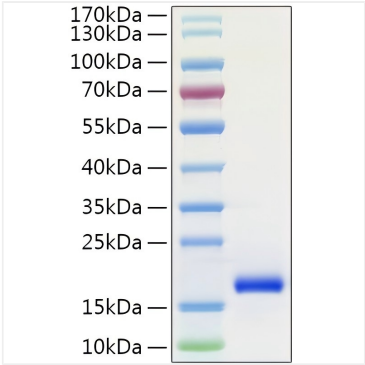
Avoid repeated freeze/thaw cycles.

 | 400-999-6126

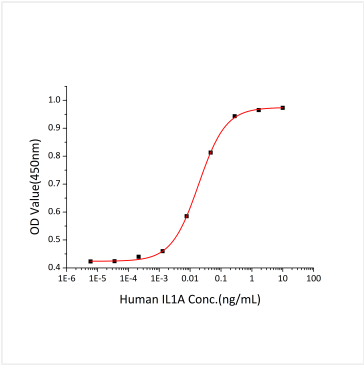
 | [cn.market@abclonal.com.cn](mailto:cn.market@abclonal.com.cn)

 | [www.abclonal.com.cn](http://www.abclonal.com.cn)

Validation Data



Recombinant Human IL-1 alpha Protein was determined by SDS-PAGE under reducing conditions with Coomassie Blue.



Measured in a cell proliferation assay using D10.G4.1 mouse helper T cells. The ED50 for this effect is 9.39-37.58 pg/mL, corresponding to a specific activity of  $2.66\times10^7\sim1.06\times10^8$  units/mg.