

Catalog No.: RP03513 **Recombinant**

| Species | Gene ID | Swiss Prot |
|---------|---------|------------|
| Human | 3931 | P04180 |

Tags
C-His

Phosphatidylcholine-sterol
acyltransferase;1-alkyl-2-
acetylgllycerophosphocholine
esterase;LCAT

| | |
|---------------|---------------------------------------|
| Source | Purification |
| HEK293 cells | ≥ 95 % as determined by Bis-Tris PAGE |

| Calculated MW | Observed MW |
|---------------|-------------|
| 48.2 kDa | 65-70 kDa |

< 1 EU/μg of the protein by LAL method.

Lyophilized from 0.22µm filtered solution in PBS (pH 7.4). Normally 8% trehalose is added as protectant before lyophilization.

Centrifuge the tube before opening.
Reconstituting to a concentration more than 100 µg/ml is recommended.
Dissolve the lyophilized protein in distilled water.

 | 400-999-6126

 | cn.market@abclonal.com.cn

 | www.abclonal.com.cn

Recombinant Human LCAT Protein is the only enzyme capable of esterifying cholesterol in plasma, thus determining the maturation of high-density lipoproteins. Because it maintains an unesterified cholesterol gradient between peripheral cells and extracellular acceptors, for a long time, LCAT has been considered as a key enzyme in reverse cholesterol transport.

Recombinant Human LCAT Protein is produced by HEK293 cells expression system. The target protein is expressed with sequence (Phe25-Glu440) of Human LCAT (Accession #NP_000220.1) fused with His tag at the C-terminus.

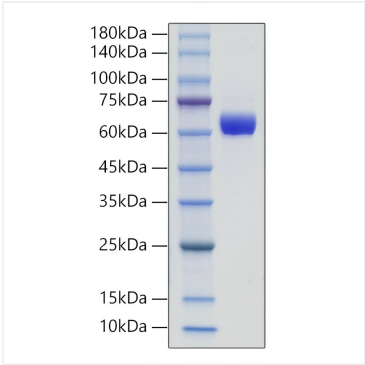
Recombinant Human LCAT Protein at 1µg/ml (100µl/Well) on the plate. Dose response curve for Anti-LCAT Antibody, hFc Tag with the EC50 of 9.0ng/ml determined by ELISA.

Store at -20°C. Store the lyophilized protein at -20°C to -80 °C up to 1 year from the date of receipt.

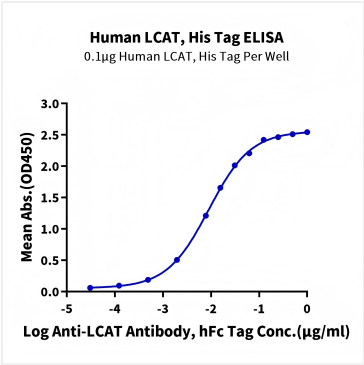
After reconstitution, the protein solution is stable at -20°C for 3 months, at 2-8°C for up to 1 week.

Avoid repeated freeze/thaw cycles.

Validation Data



Recombinant Human LCAT Protein was determined by Bis-Tris PAGE under reducing conditions with Coomassie Blue.



Recombinant Human LCAT Protein at 1μg/ml (100μl/Well) on the plate. Dose response curve for Anti-LCAT Antibody, hFc Tag with the EC50 of 9.0ng/ml determined by ELISA.